

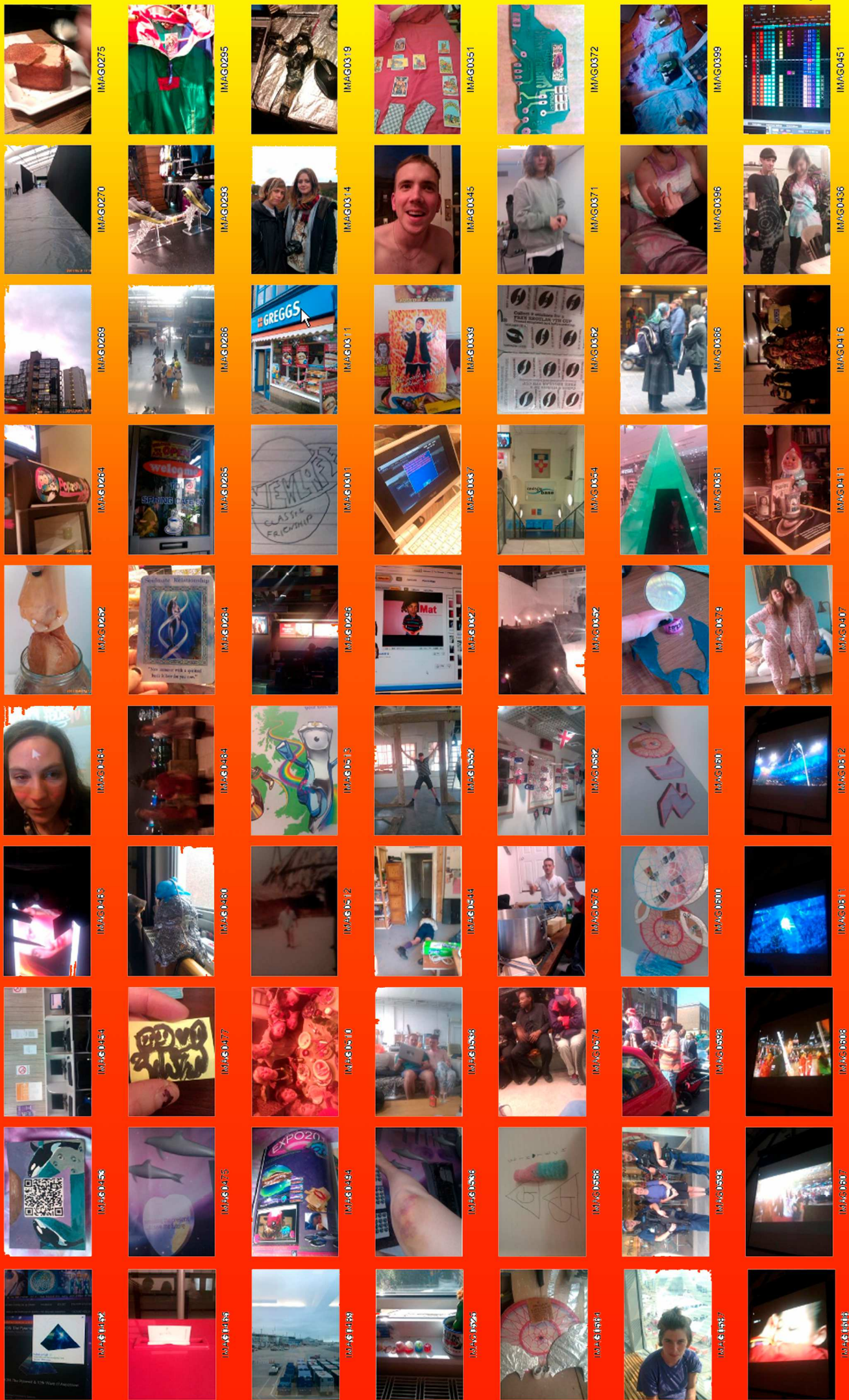
# Holly White

October 2011-summer 2012



It's hard to decide exactly where the story begins, but I have used as a starting point the date when We Found Love the official video was uploaded to youtube. Because that's when that song felt most real and I think that's when things started happening and things changed. I'd made The New Deal a few months previously, for me that was like some movie set or prediction for this apocalyptic Olympics merch stand/opening ceremony or something. With Jessie J. And that was the last sculpture I made, so that might also mark the beginning. Basically it starts roughly a year ago, when the Olympics and 2012 felt just around the corner. And then they happened and now they're over. So I wanted this work to mark the end, or at least, the Olympics closing ceremony can mark the end, and therefore both mark a beginning, some new beginning. So there's this space in between the first beginning and the new beginning, and I feel weird about it. So this is about that.

# PHONE PHOTOS FROM THEN TILL THE END (edited)



# 2011

# This could also be where the story begins...



I made this work in summer 2011, and this is since.

(I'm making an assumption) but why is it necessary that your friends/people you know be involved in the production of your work?

about an hour ago · Like · Comment

**Holly Reallife** i'm not sure it is necessary, it just happens...probably if your not too precious about your work, and you know your friends can do some stuff better than you...  
about an hour ago · Like

**Holly Reallife** of course it's less lonely  
about an hour ago · Like

**Ben Vickers** are you lonely holly?  
about an hour ago · Like

**Holly Reallife** sure why not  
about an hour ago · Like

**Ben Vickers** <http://dieterkloss.com/> features...  
 **DIETER KLOSS | R.I.P | 17/04/10 - 14/10/10**  
dieterkloss.com  
31 minutes ago · Like · Remove Preview

**Ben Vickers** for me it's something of the past now... but it exists in the work, physically.. i don't know how to comment  
30 minutes ago · Like

**Ben Vickers** but why is it there?  
30 minutes ago · Like

**Holly Reallife** why is dieter kloss in my sculpture?  
28 minutes ago · Like

**Ben Vickers** yes  
28 minutes ago · Like

**Holly Reallife** i think you know better than i'd be able to explain... i feel like it relates the work in more ways than one.  
26 minutes ago · Like

**Ben Vickers** heartbreak relic.  
25 minutes ago · Like

**Holly Reallife** i think dieter kloss is quite influential for this sculpture,, as an object and project it represents a lot for you(and me) emotionally ...a lot of people know that,,, that tshirt is weighted to the people who know you.....but i'm also interested in it as a project to begin with, i was interested and confused by your attempts to acquire capital via an 'alternative' buissness/product- and i consider whether it 's okay, and how i can replicate it  
20 minutes ago · Like

**Holly Reallife** i think this is a language that is hard to explore, the language that is defined by a social group, and their interaction as a group with objects or stories or jokes. but i find it very powerful to use  
18 minutes ago · Like

**Holly Reallife** e.m.o.tiona.l.  
18 minutes ago · Like

**Ben Vickers** i guess that's a sensitive reading of what dieter kloss embodied, i guess i just wanted to know, even if i already knew, what your motives were.  
16 minutes ago · Like

**Ben Vickers** It's important to me, not just from a personal narrative perspective that dieter kloss lives on... it does daily for me  
15 minutes ago · Like

**Holly Reallife** lol(is that okay?) - are those what you thought my motives were?  
14 minutes ago · Like

**Ben Vickers** the transference of the yin yang symbol from the promotional ephemera to my person, to all of my accounts, my universal avatar.. has it's roots in dieter kloss  
14 minutes ago · Like

**Ben Vickers** anyway...  
12 minutes ago · Like

**Holly Reallife** what did you think my motives were ben?  
12 minutes ago · Like

**Ben Vickers** exactly what you said. it makes perfect relational sense, i just wanted to hear you say it... so in the future i can reference this conversation.  
11 minutes ago · Like

**Holly Reallife** to your mum  
9 minutes ago · Unlike · 👍 1 person

Write a comment...

**Ben Vickers**  
**Holly Reallife** are you digital native?  
about an hour ago · Like · Comment

**Holly Reallife** \*opens new tab  
about an hour ago · Like

**Holly Reallife** \*searches in google  
about an hour ago · Like

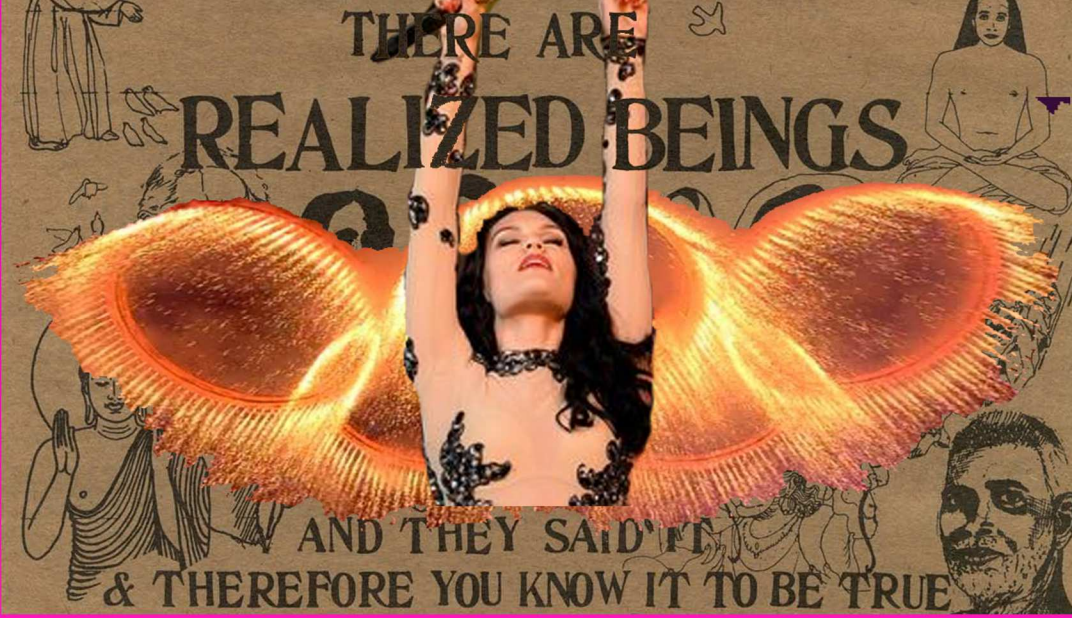
**Holly Reallife** i don't think so. i grew up sending faxes  
about an hour ago · Like

Write a comment...

**Holly Reallife**



2012



2011



(Existed before and existed after.)



married if we're still single when we're 40

# GOTHTECH

REMEMBER THE GOOD TIMES ASK ANYTHING ABOUT GOTHTECH WEBSITE  
NIKE GMAIL OFFICIAL SPONSORS OF OLYMPIC DANCE RAVE 2012 PINK INTO BLUE TRUE LOVE I HATE YOU



# Goth Tech

